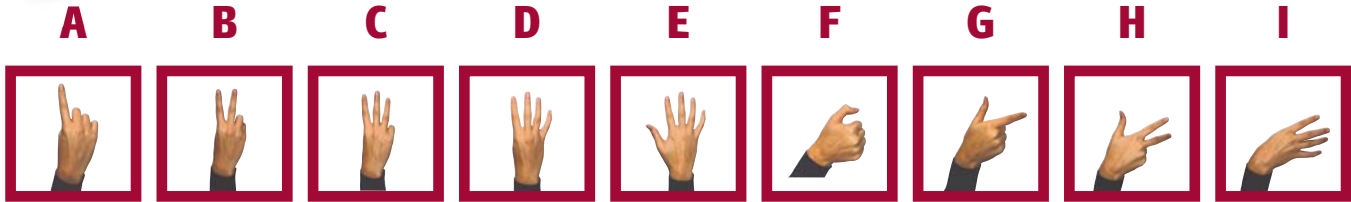
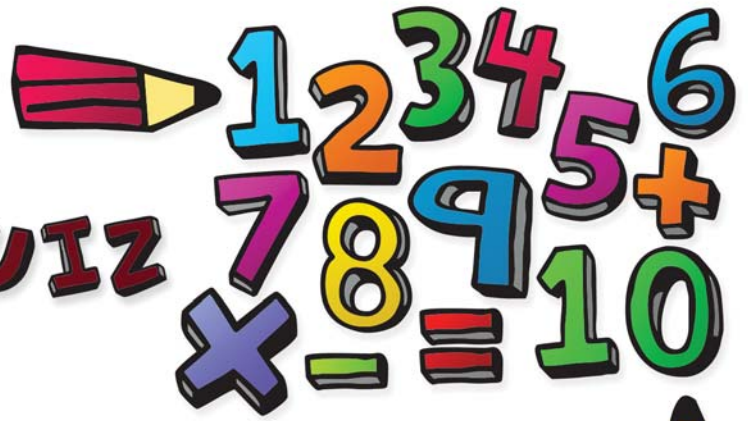


# BSL MATHS QUIZ

3 (a bit harder)



Complete the **BSL MATHS QUIZ** by using the key above.

Here is an example:  $6 - \mathbf{B} = 4$

1  $\underline{\quad} + 7 = 12$

2  $\underline{\quad} - 3 = 5$

3  $4 \times \underline{\quad} = 36$

4  $\underline{\quad} \times 3 = 12$

5  $\underline{\quad} \times 5 = 40$

6  $6 \div \underline{\quad} = 3$

7  $\underline{\quad} \div 4 = 2$

8  $2 \times \underline{\quad} + 1 = 7$

9  $5 \times \underline{\quad} - 1 = 29$

10  $2 \times \underline{\quad} + 16 = 20$

11  $5 \times \underline{\quad} - 3 = 32$

12  $6 \times \underline{\quad} - 2 = 46$

13  $5 \times \underline{\quad} + 11 = 16$

14  $44 = 5 \times 1 \underline{\quad} - 1$

15  $19 = 2 \times \underline{\quad} + 13$

16  $E + \underline{\quad} = 12$

17  $H - 3 = \underline{\quad}$

18  $D \times \underline{\quad} = 36$

19  $\underline{\quad} \times C = 12$

20  $\underline{\quad} \times E = 40$