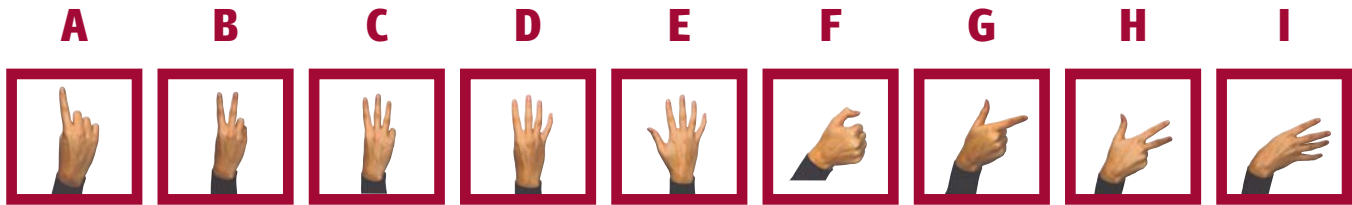
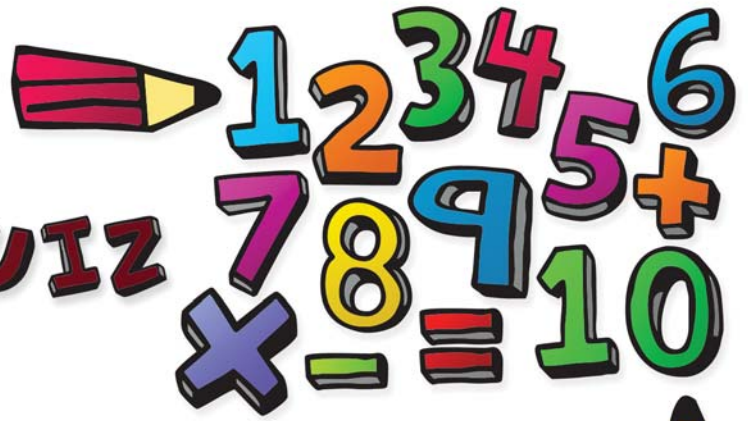


# BSL MATHS QUIZ

2 (a bit harder)



Complete the **BSL MATHS QUIZ** by using the key above.

Here is an example:  $6 - \mathbf{B} = 4$

1  $5 + \underline{\quad} = 9$

2  $17 - 9 = \underline{\quad}$

3  $\underline{\quad} \div 3 = 3$

4 What is  $\frac{1}{2}$  of 10?  $\underline{\quad}$

5  $16 \div 4 = \underline{\quad}$

6  $3 \times \underline{\quad} = 9$

7  $5 + 3 = \underline{\quad}$

8  $\underline{\quad} - 4 = 5$

9  $12 - \underline{\quad} = 6$

10 Your fingers  $\div$  your thumbs =  $\underline{\quad}$

11  $20 \div \underline{\quad} = 4$

12  $60 \div 10 = \underline{\quad}$

13 What is  $\frac{1}{2}$  of 18?  $\underline{\quad}$

14  $4 \times \underline{\quad} = 12$

15 What is half a dozen?  $\underline{\quad}$

16 Your ears  $\div$  your nose =  $\underline{\quad}$

17  $\underline{\quad} \times \underline{\quad} = 8$

18  $5 - 4 + 6 = \underline{\quad}$

19  $\underline{\quad} + 7 - \underline{\quad} = 4$

20  $5 \times 2 - \underline{\quad} = 3$